



## heroyal D 72 PF EM

Front door system for efficient processing



## Front door system

First-class materials, technical perfection down to the last detail and a wide range of design options are what distinguish the efficient heroal systems technology. These are benefits that impress. For decades, heroal has been a reliable partner for architects, builders and fabricators with innovative aluminium and aluminium composite solutions for the building shell.

Planners appreciate the diversity of the design possibilities, builders can bring their specific requests to life with a reliable system and our partners benefit from the economical and efficient heroal system solutions.

The heroal D 72 PF EM door casement profile is a highly efficient addition to the heroal D 72 front door system for easy processing. The new thermal break geometry, the new reversible heroal infill panel attachment technique, the revised accessories and the removal of the exterior shadow gap ensure that the sash profile meets the latest requirements for efficient and economical fabrication.

Discover the possibilities of the new heroal D 72 PF EM front door option.



## heroal D 72 PF EM

Page 4

Door casement profile for fast and efficient processing

## Designs and opening types

Page 5

## Processing advantages

Page 6

## Threshold solutions

Page 10

## heroal technologies

Page 11



## heroal D 72 PF EM

Door casement profile for fast and efficient processing



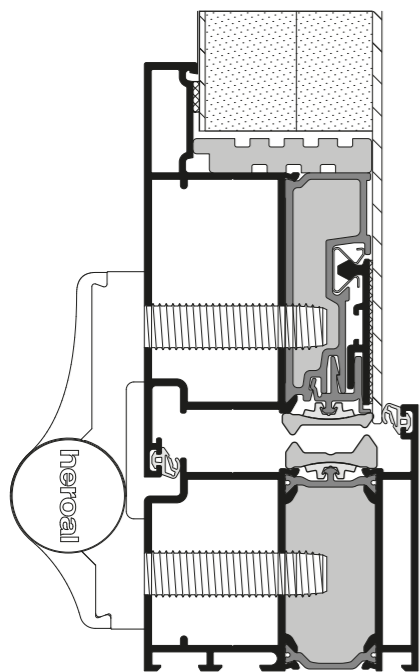
The heroal D 72 PF EM sash profile is based on the heroal D 72 system logic and supports exceptionally fast and efficient door fabrication using the same tools. The profile geometry, including the fixed internal backstop without glass strip (PF = "Panel Fixed") is designed for a standardised door panel thickness of 48 mm. This and other design solutions ensure extremely easy and efficient fabrication and installation (EM = "Easy Mount"). They enable up to 20% faster fabrication and greater processing efficiency.

### System dimensions and performance characteristics

- » Design depth: 72 mm
- » Minimum combined view width: 160 mm
- » Max. thickness of glass/infill panel: Frame up to 54 mm, casement up to 68 mm (glass) and 48 mm (infill panel)
- » Heat insulation:  $U_i > 1.7 \text{ W/m}^2\text{K}$   
(satisfies all requirements of the GEG 2020)
- » Air permeability: Class 4
- » Tightness against driving rain: Class 9A
- » Wind load resistance: Class C4/B4
- » Door element size 1,230 x 2,180 mm for testing in line with DIN 14351-1
- » Burglary resistance: RC 2  
(Door element size: Max. 1,400 x 3,000 mm)
- » Patented reversible infill panel attachment technique

### Versions and design

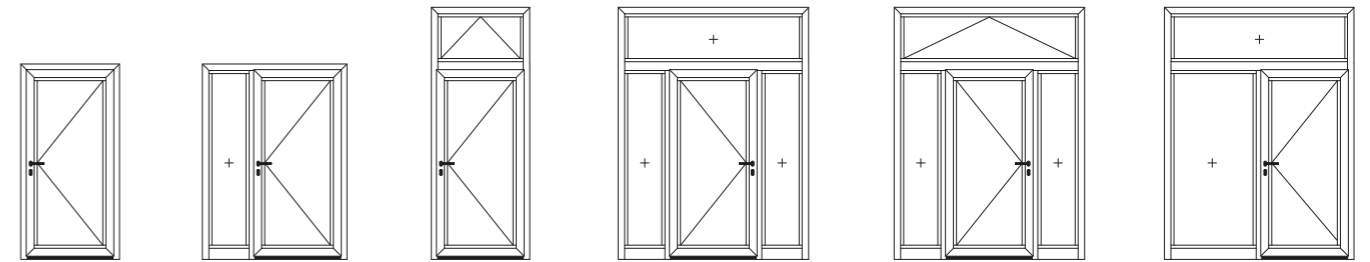
- » Opening types: Single casement elements with side section and transom windows
- » heroal D 72 PF "Panel Fixed" design option with fixed backstop, no glass strip required
- » Opening or flush casement
- » Framed or one-sided casement frame FüF
- » System-compatible window system: heroal W 72
- » High-quality colour design with heroal hwr powder coating, heroal SD surface designs and Les Couleurs® Le Corbusier



heroal D 72 PF EM, sectional view

## Designs and opening types

Single casement elements with side section and transom window

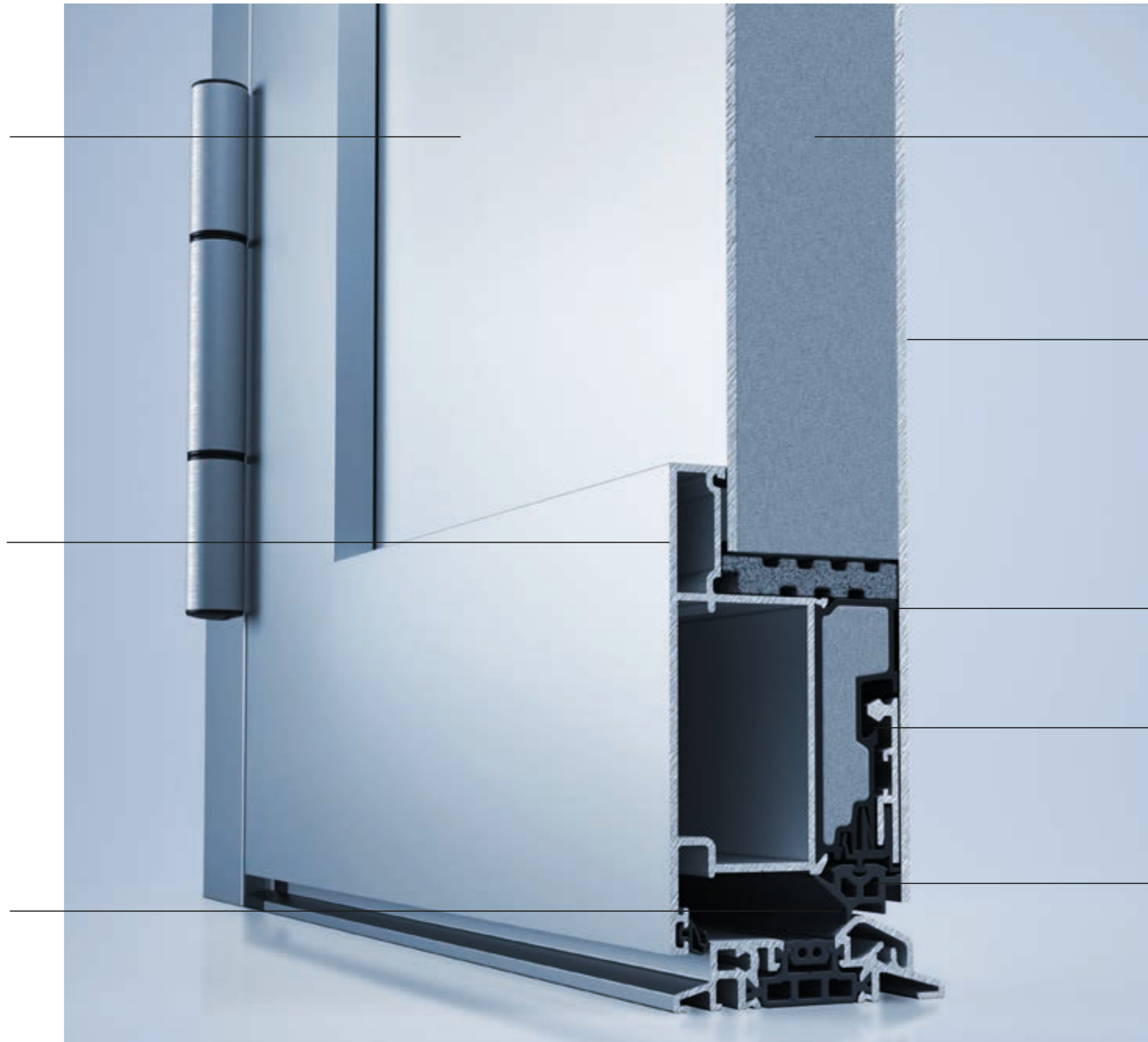


## Processing advantages

+ Faster processing time and easier installation thanks to removal of fabrication steps

+ New interior semi-facing with fixed backstop eliminates the need for the glass strip and the associated work steps

+ New fitting rebate insulation (TPE) provides for an ideal attachment of the motif board



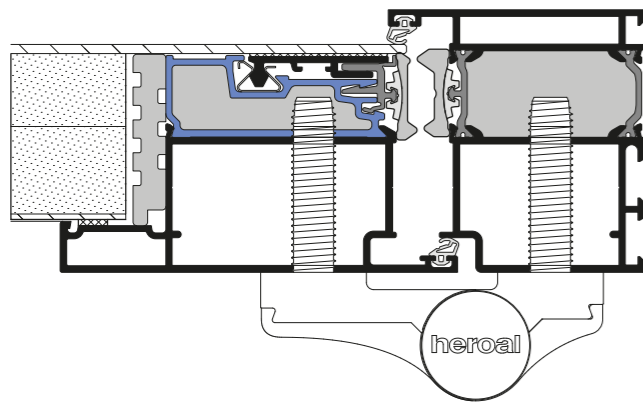
+ Designed for a door infill panel thickness of 48 mm with no additional processing of the door infill panel

+ More flexible tolerances in processing due to the removal of the outer shadow gap

+ New thermal break technology to prevent warping with no additional processing steps and the removal of the exterior semi-facing

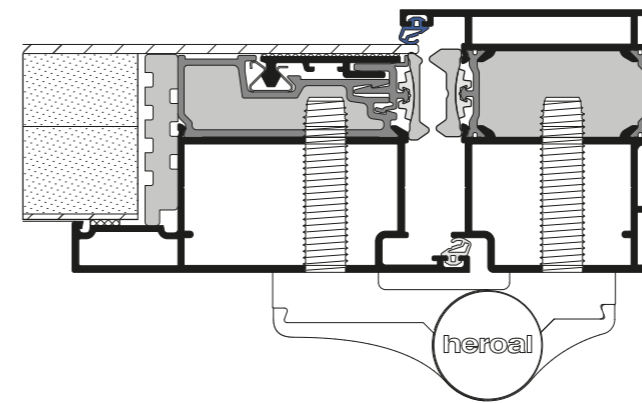
+ Optimised reversible infill panel attachment technique for even faster and easier installation of the infill panel

+ Improved insulation and sealing options with new vulcanised moulded corners and fewer work steps



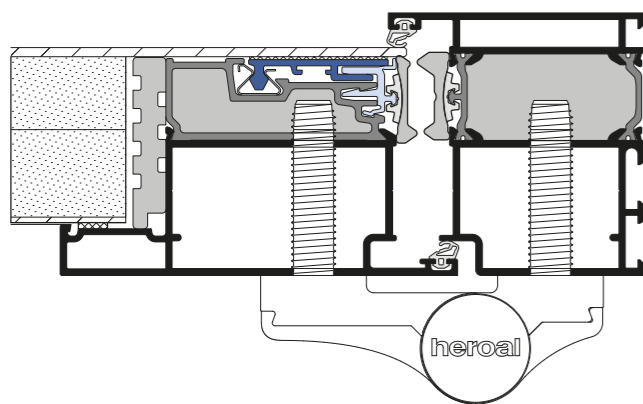
### Thermal break technology

The thermal break technology prevents warping without any additional fabrication steps. This eliminates the usual work on the profile composite and thrust springs, which makes processing easier, faster and safer. The thermal break serves as exterior semi-facing, and as a support to mount the reversible retaining strip needed to attach the infill door panel.



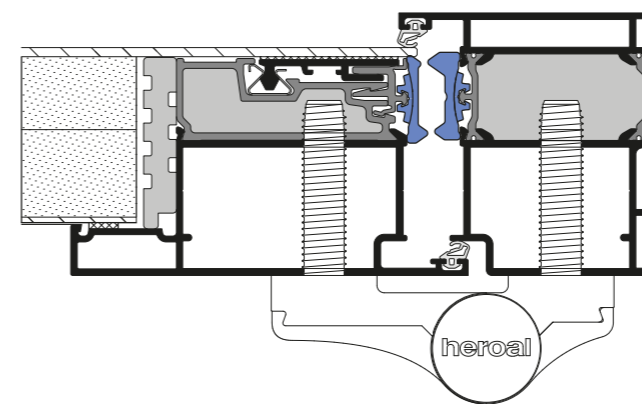
### Sash profile behind the backstop

The removal of the outer shadow gap and the sash profile behind the backstop eliminate the need for processing tolerances. Optional, internally flush or offset (opening casement) versions are available.



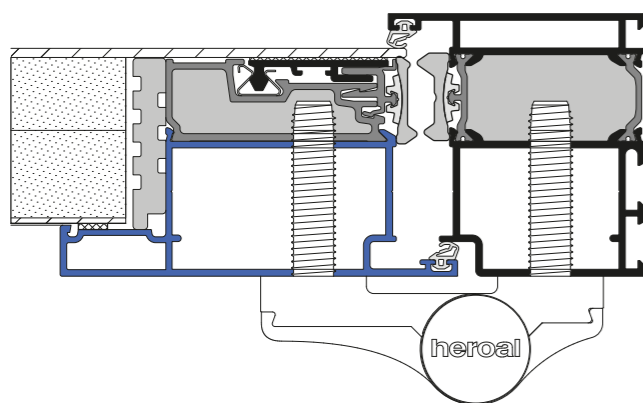
### Reversible infill panel attachment

By comparison to the standard infill panel attachment using 2K adhesives on the entire surface, the reversible infill panel attachment is not only the most efficient and reliable method of infill panel installation, it is now even faster and easier: no prior processing of the profile is required for attachment. Instead of the familiar mechanical locking pins, a circumferential clip profile joins the door infill panel to the sash profile. There is also no longer any need to insert the sealing cord.



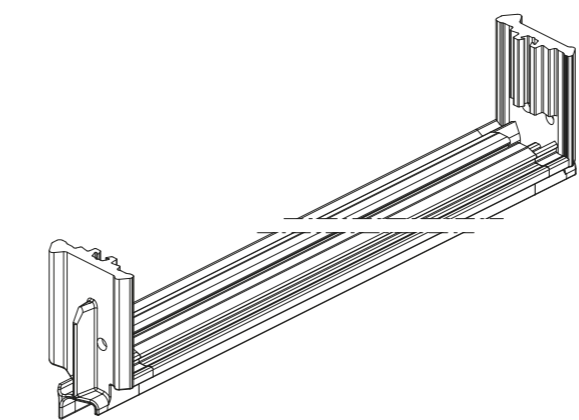
### Sealant and insulation

The vulcanised moulded corners connect the door sealant with the fitting rebate insulation so that standard sealing wedges are no longer required. This eliminates the need for time-consuming work steps and reduces the amount of material used. The fitting rebate insulation made of thermoplastic elastomer (TPE) enables an optimal seal to the motif plate of the door infill panel.

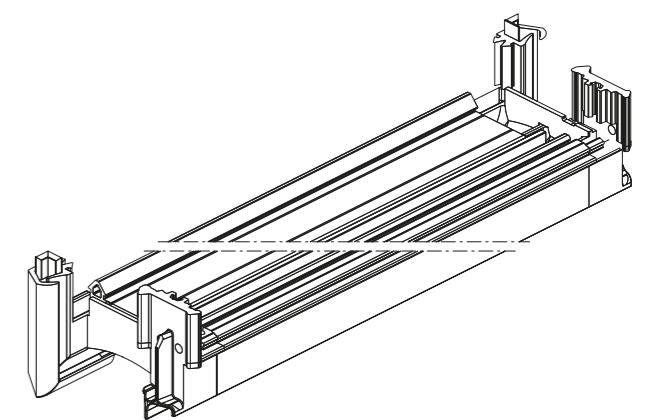


### New PF "Panel Fixed" profile

As the door casement profile does not require a glass strip, processing is very easy and fast: the sash profile with fixed internal backstop (PF = "Panel Fixed") is designed for a standard door panel thickness of 48 mm. This eliminates the need for any additional processing of the door infill panel. Either a flush or opening casement can be used on the inside. When the opening sash profile is used, there is no shadow gap on the inside and outside.



New door sealant with vulcanised moulded corner for flush casement



New door sealant with vulcanised moulded corner for opening casement

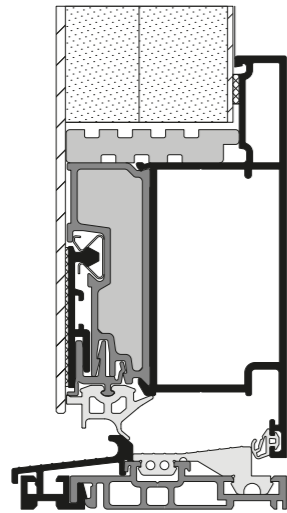


## Threshold solutions

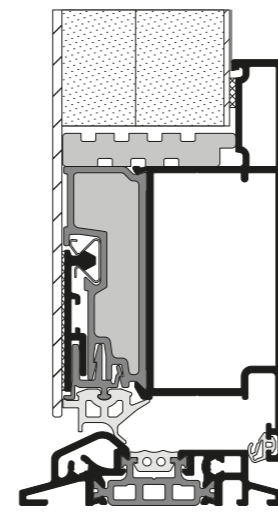
For all requirements and applications

Matching the simple and efficient production of the heroal D 72 PF EM sash profile, the new 2-part continuous threshold solution can be used for the door seal in addition to the classic screw-in threshold solution. This combines the advantages of the continuous threshold construction running

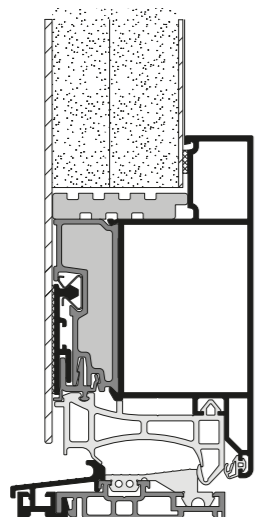
under the frame with the advantages of the surface-mounted door seal of the screw-in solution. In addition, the profiles are simply clipped into place. This further optimises processing times.



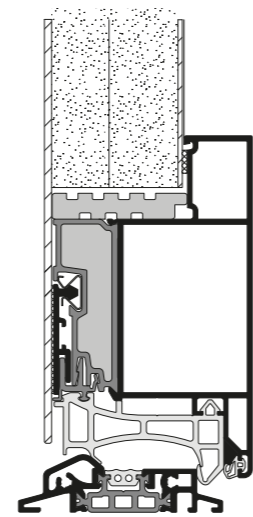
2-part continuous threshold with flush casement



Screw-in threshold with flush casement



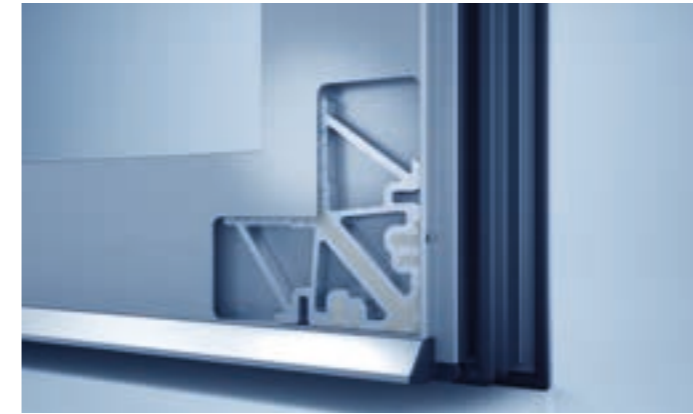
2-part continuous threshold with opening casement



Screw-in threshold with opening casement

## heroal technologies

For optimised and time-saving fabrication



### heroal corner angle technology

The innovative heroal sealant injection only uses a small amount of material to guarantee an optimal seal of the element mitre with complete sealant coating of the corner connectors on four sides for even greater system reliability. Economical and time-saving door fabrication is ensured by the heroal corner angle technology that optimises the fabrication processes during corner angle installation. Optimal and controlled sealant distribution and the innovative corner angle geometries save a considerable amount of material. The heroal expansion corner angles support the alignment to mitre-cut aluminium profiles so that door fabrication can continue immediately, without additional alignment.



### heroal T-connector technology

The heroal T-connector technology enables optimised and time-saving door fabrication. The innovative heroal sealant injection has been developed to perfectly seal T-connections/joints. The use of closed-cell sponge for rebate sealing ensures excellent system reliability. The innovative heroal sealant injection guarantees the optimal sealing of T-connections/joints using just a small amount of material.



### heroal fitting technology

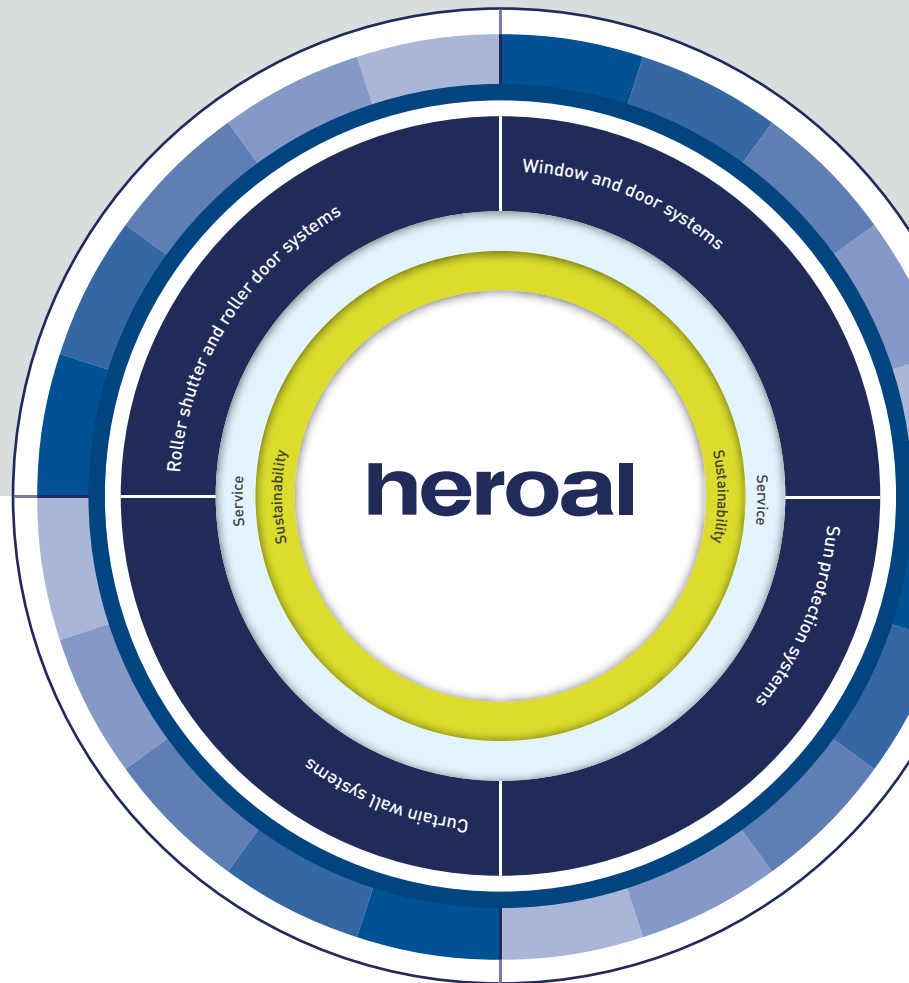
The heroal DF fitting technology guarantees the highest level of flexibility and pursues the universal design approach, which can be individually tailored to the requirements of the user at any time and is additionally distinguished by intuitive handling and user-friendliness. The heroal door fittings are compatible with the latest technologies such as keyless entry and Bluetooth, which further increase ease of use. In the area of high-quality, optical hinge fitting technology, we offer a barrel and surface-mounted hinge option as well as a concealed solution.

# heroal – the aluminium systems supplier

As a leading aluminium systems supplier, heroal develops and produces perfectly coordinated systems for windows, doors, curtain walls, roller shutters, roller doors and sun protection, complemented by folding and sliding shutters, insect screens, patio roofs and carports. By minimising energy consumption in production and maximising energy conservation in use, heroal system solutions make a vital contribution to the realisation of sustainable building – combined with maximum efficiency in the installation of the systems and the enhancement of the value of buildings.

## Innovation, service, design, sustainability

The heroal brand stands for system solutions that combine practical innovations, industry-leading service and high-quality design that can be integrated into every architecture with comprehensive sustainability.



Roller shutters | Sun protection | Roller doors | Windows | Doors | Sliding doors | Curtain walls | Patio roofs

**heroal – Johann Henkenjohann GmbH & Co. KG**

Österwieher Str. 80 | 33415 Verl (Germany) | Tel. +49 5246 507-0 | Fax +49 5246 507-222 | [www.heroal.com](http://www.heroal.com)